



**Gautamee**

GROUND ENGINEERING



# CONTRIBUTING FOR A BETTER TOMORROW

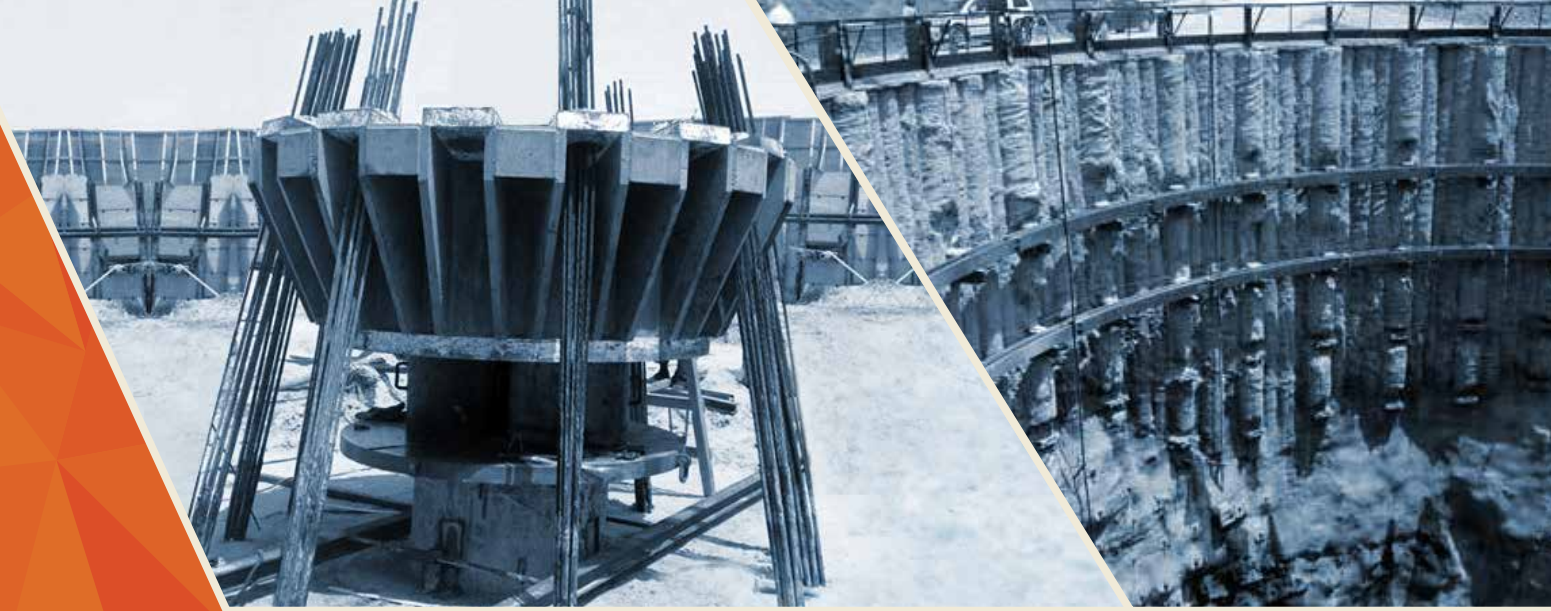
## ABOUT Gautamee

### SOLUTIONS THAT SUIT YOU DOWN TO THE GROUND

Gautamee has grown steadily over the past 25 years to become one of the India's most valued independent ground-engineering contractor. We specialize in the design and installation of Rotary Pile, Micropile, Underreamed Pile, Rock Drilling (DTHH), Pre-stressed Rock Anchors, Self Driven Anchors, Earth Retention, Ground Improvement, and Testing & Analysis on projects throughout India. While our heritage spans four decades, we are an innovative company, continually improving and investing to the benefit of our company, our employees, our customers, our community and the environment. This achievement is reflected in the amount of repeat business we win and the number of projects we undertake for clients to whom we have been recommended. Many of our competitors have diversified over the years however; we have made the decision to concentrate on where our experience and expertise lie and to remain true specialist contractors, only diversifying within the geotechnical sector. We are committed to promoting Quality, Sustainability Pile Foundation alternatives together with an industry-leading role in Health and Safety.

We are committed to promoting Quality, Sustainability Pile Foundation alternatives together with an industry-leading role in Health and Safety.





## ✓ QUALITY

Gautamee recognize the importance of meeting our client's requirements in relation to quality of product, program and value for money, as well as the need to continually improving our performance all with the aim of enhancing client satisfaction. Gautamee realize that in a demanding and challenging marketplace we will only satisfy customer requirements by investing in the best people, plant, processes and technology to fulfill our own high performance expectations when it comes to delivering quality in all areas of product range, manufacturing standards, operations and service.

## ♻️ SUSTAINABILITY

Gautamee will deliver, manage and own sustainable infrastructure that helps communities and individuals live within environmental limits. We will build on our heritage to lead the sector in providing our customers with a combination of innovative solutions and engineering excellence that lasts, all in accordance with our ethical framework. We are committed to responding to the sustainability challenge and will achieve by innovation in the design, construction and management of assets. We will strive to go beyond customer expectations to help them exceed their goals. We will take a long-term perspective across our business operations and the assets we provide, own and manage, including the challenge of adapting to climate change.

## ⚠️ HEALTH AND SAFETY

At Gautamee, we believe employees are the foundation of our business and safety is mandatory at our site. It is our responsibility to ensure that every person who works at our site returns home safely. Our all employees receive training as part of this program, which is also extended to sub contractors and partner organisations. As we strive for zero incident performance, the following principles provide framework:

- Management Commitment
- Appropriate Training
- System that couple operations and health & safety
- Allotment of sufficient resources
- Active employee involvement

## 👁️ VISION

To be the first stop for all solutions regarding ground engineering techniques.

## 🎯 MISSION

To focus on delivering value solutions supported by immense knowledge and a professional service, working in partnership with our clients to deliver projects on time and within budget whilst maintaining the highest levels of professionalism, integrity and honesty in all our business relationships.





## FINDING THE RIGHT SUPPORT FOR YOUR PROJECT

Gautamee has an extensive portfolio of ground engineering techniques. This, coupled with our design-build capabilities, allows us to develop and implement sustainable geotechnical construction that is specifically tailored to our client's needs.

### PILE FOUNDATION

Gautamee offer a comprehensive range of piling and foundation solutions to suit all types of buildings, structures and civil engineering works, including:

- Rotary or Large Diameter Pile
- Continuous Flight Auger Pile
- Marine Pile
- Micro / Limited Access Pile
- Rock Drilling (DTHH)
- Under Reamed Pile

### GROUND STABILISATION

Ground stabilisation methods represent a cost effective and efficient way of dealing with areas of weak soils and brownfield land.

- Inclined Rock Anchors
- Vertical Rock Anchors
- Soil Nails / Rock Bolts
- Self Driven Anchors
- Shotcrete / Gunneting
- Structural Steel Waler Fabrication
- Drilling & Grouting

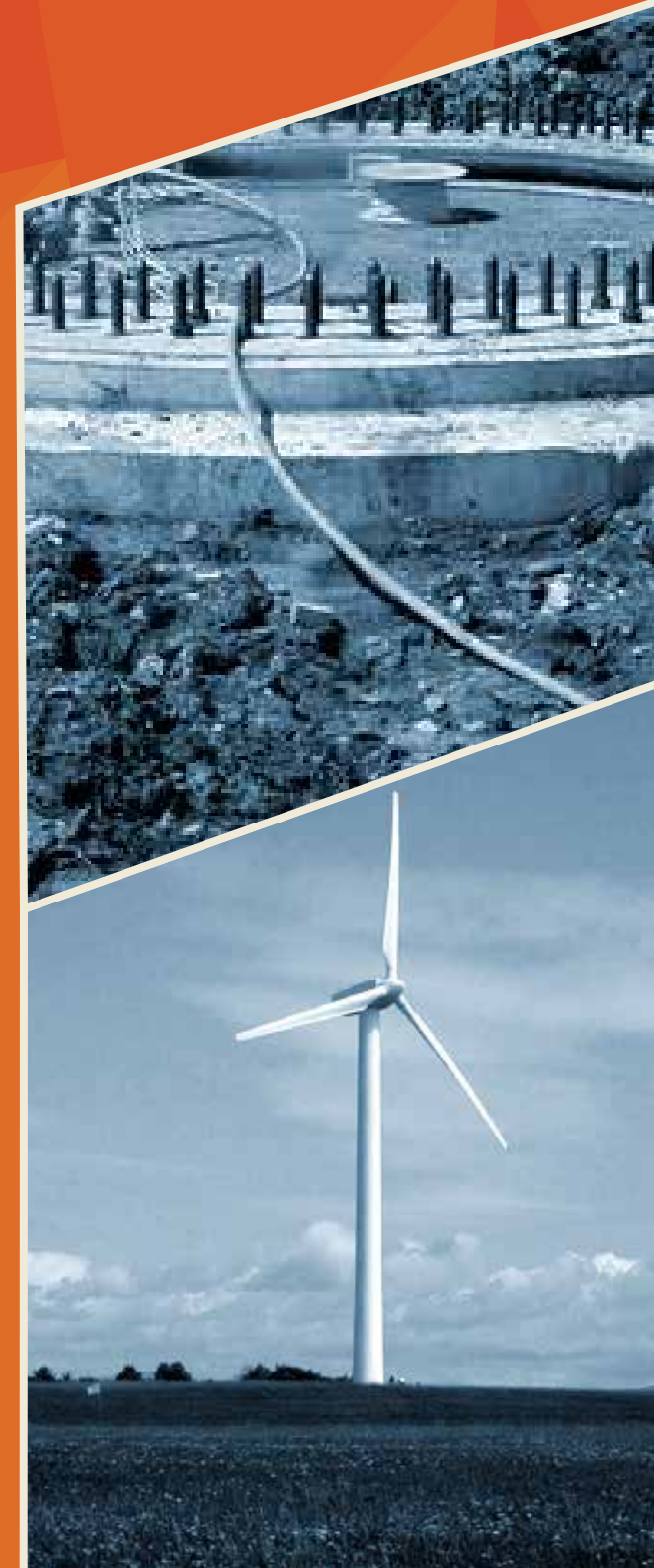
### TESTING & ANALYSIS

Testing and analysis services are provided through highly qualified experienced professionals, offering an independent, reliable and competitive service in the areas of:

- Soil Investigation
- Pile Testing
- Anchor Testing
- Permeability and Percolation Testing

## PROVIDING GEOTECHNICAL SOLUTIONS FOR SENSITIVE ENVIRONMENT

When it comes to geotechnical construction, power plants and industrial facilities present their own unique set of challenges. Gautamee has the technology and experience to provide geotechnical solutions for these sensitive environments. For new Selective Catalytic Reduction (SCR) units, which are large pieces of emissions control equipment that reduce nitrogen oxide (NOx) emissions, Micropiles are often the foundation of choice for SCR units and other power plant equipment such as scrubbers and flue gas desulphurization units. Because vibration and impact to adjacent structures are minimal during installation, micropiles can be installed in limited access areas such as building interiors and below overhead structures. Micropiles can also be installed adjacent to, or through existing foundations. We also install augercast piles and perform jet grouting for new construction and renovation projects at power plants. Gautamee has also provided foundation solutions for the wind energy industry. Micropiles are effective foundation elements for new wind turbines in areas with problematic geology and are useful in the repair and strengthening of existing wind turbine foundations. At other industrial sites, such as manufacturing facilities, Gautamee techniques have been widely used. We have designed and installed foundation systems to accommodate new machinery and facility additions.







## WATER

Gautamee offers a vast range of water pumps to meet any need. Our water pumps are produced with state-of-the-art materials that improve their ability to resist internal and external stresses, and guarantee their high performance, quality and durability over the long term, thereby limiting their environmental impact. Gautamee pumps are the result of continuous research and technological innovation directed towards offering flexible, easy-to-use solutions for every type of application.

Our range includes pumps manufactured from metals which are fused, die-cast, or hot pressed; we also produce pumps from cold worked

laminated stainless steels, composite materials with inserts, friction-welded components and specialist plastics - injection stamped.

- Centrifugal Pumps
- Submersible Pumps
- Submersible Bore-Hole Pumps
- Fire-Fighting Pumps
- Booster Sets
- Control Panel
- Cables

## EXPERIENCE IN EVERY CONSTRUCTION SECTOR

Our solutions are suitable across the whole built environment and we have experience in delivering ground-engineering services to a broad range of sectors. Our advance technical and project management capabilities have made us specialist contractor of choice on an enviable list of landmark projects.

### HOSPITALITY PROJECTS

Taj Welington Mews – Colaba  
Maker Makcity – BKC  
ICLS Hospital – Vileparle

### COMMERCIAL PROJECTS

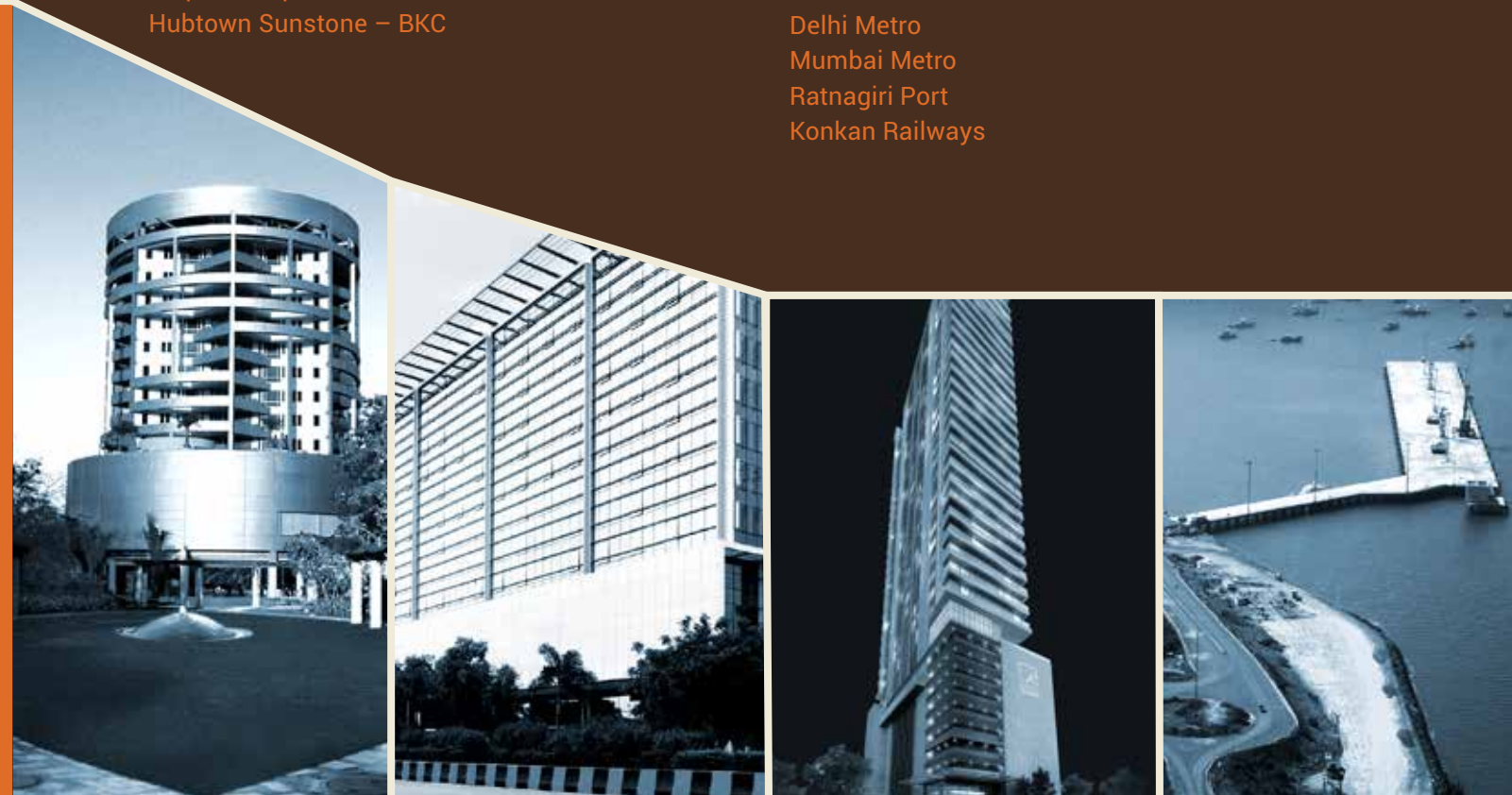
Maker Makcity – BKC  
Kohinoor Square - Dadar  
Piramal Peninsula – Lower Parel  
FIFC – BKC

### RESIDENTIAL PROJECTS

Hubtown Turf View – Mahalaxmi  
Runwal The Residence 91 – Neapensea Road  
Kalpataru Sparkle - BKC  
Hubtown Sunstone – BKC

### INFRASTRUCTURE PROJECTS

Pune Muncipal Corporation  
MCGM  
Delhi Metro  
Mumbai Metro  
Ratnagiri Port  
Konkan Railways



Happy  
Customers

+100

Projects

+50

Years of  
Experience

+25

Offices

03

## TESTIMONIAL

GAUTAMEE have installed most complicated inclined rock anchors in Mumbai, drawing on their technical expertise they overcame immense logistical & geotechnical challenges. In doing so they achieved what some competitors said was impossible.

**Majumdar**

Project Manager - L & T ECC

We have utilized Gautamee for at least three major projects and have been very pleased with the attention to detail, ability and desire to make changes at our request and the finished project.

**Rajeevan**

AVP-Projects, Hubtown City Ltd

Every member of the Gautamee team took the project to heart and gave their best. Gautamee team members' positive attitude and work ethic resulted in exceeding all expectations. The client witnessed a truly positive and enjoyable working environment between the design and construction personnel.

**Manoj.N.V.**

Vice President, QHPL

Team Gautamee is very conscientious and thoughtful, certainly an asset to clients.

**Kadam**

Vice President, Runwal

## CLIENTELE

### CONSULTANTS



MAHIMTURA CONSULTANTS Pvt. Ltd.



### DEVELOPERS



## Gautamee | GROUND ENGINEERING

129, Ramgopal Industrial Estate  
Dr. R.P Road, Opp Jawahar Talkies  
Mulund (W), Mumbai-400080

E-mail [info@gautamee.com](mailto:info@gautamee.com)

Follow us: [!\[\]\(4729e517bc6a7cd81c8025b9646574fb\_img.jpg\)](#) [!\[\]\(90a2fb2f2c617b26262139ae4159c0a0\_img.jpg\)](#) [!\[\]\(40394d85fb59f1a516df36b5a2680ad2\_img.jpg\)](#) [!\[\]\(053a9c97005e586ce890308421354101\_img.jpg\)](#)

### KEY CONTACT

JIGNESH JANI  
Business Head  
Mob +91 9870357133